

We market our products in many countries of the world. Again and again we and our partners in the field receive interesting reports from dairy farmers and scientists. We are happy to process this information to you and hope that you will find it helpful. Send us your suggestions – we count on them to help us give you a better product!

Many thanks, your KRAIBURG Team

ISSUE 61 - January 2019

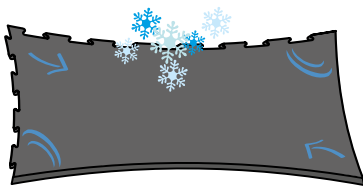
## RUBBER PROPERTIES – EXTREMELY COLD VS. EXTREMELY WARM

Rubber is a natural material and therefore has the properties of a “natural product”:

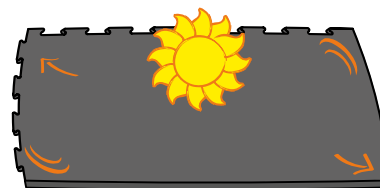
### Thermal expansion:

Temperature changes cause changes in size. These are not permanent, and always regenerate.

**Extent:** about 0.2 % per 10 °C (= about 2 mm per meter per 10 °C )

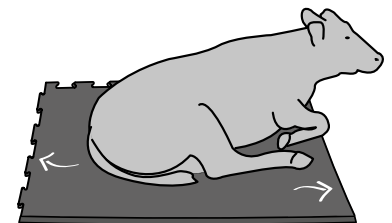


**with cold:** rubber contracts



**with heat:** rubber expands

**Remaining deformation from load:** Mechanical loads can cause lasting changes in length and width. Here the rubber quality plays an important role.



**Extent:** with KRAIBURG there is a **maximum of only 1 %**  
▶ Here KRAIBURG quality speaks for itself!

### From Practice:

our rubber mats are used in **extremely cold...**

... as well as **in extremely warm countries:**

#### Mongolia



Mongolia



#### United Arab Emirates



Morocco



you will find **further**  
interesting **practical**  
experiences at:  
[www.kraiburg-elastik.com](http://www.kraiburg-elastik.com)