

We market our products in many countries of the world. Again and again we and our partners in the field receive interesting reports from dairy farmers and scientists. We are happy to process this information to you and hope that you will find it helpful. Send us your suggestions – we count on them to help us give you a better product!

Many thanks, your KRAIBURG Team

ISSUE 50 - May 2017

## RENOVATION CALVING AREA

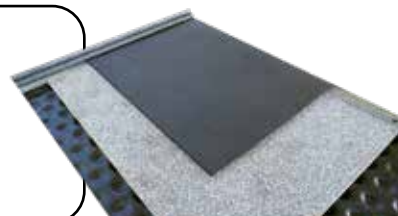
For a stress-free and healthy calving, cow, calf and caregiver need the following things:

- size of calving pen: minimum 4 x 4 m
- good care of the cow
  - ▶ sufficiently large sized drinking bowl
  - ▶ easy access to feed
- floor: clean, dry, slip-resistant and soft
  - ▶ should be easy and fast to clean
- after each calving: changing of litter for optimal hygiene!



### VITA:

- for calving pen / selection area
- three-layer structure (rubber-foam-rubber)
  - ▶ softness and slip resistance for cow, calf and farmer
- litter material is only necessary for absorbing liquids



## Farmer Leopold Hollersbacher:

"You can notice that the cows feel very good on the system. They are fitter after calving and they immediately stand up to lick their calf. The animals enjoy using the VITA for calving. Some of them even push us as they want to be lead into the calving box just before birth.

The system enables a good hygiene when calving. Furthermore you need considerably less litter material than previously on concrete."

### PROFILE:

- approx. 50 dairy cows
- elevated cubicles with KEW Plus and KKM
- slatted floor with pediKURA S system
- milking parlour with KURA Flex

### Before renovation



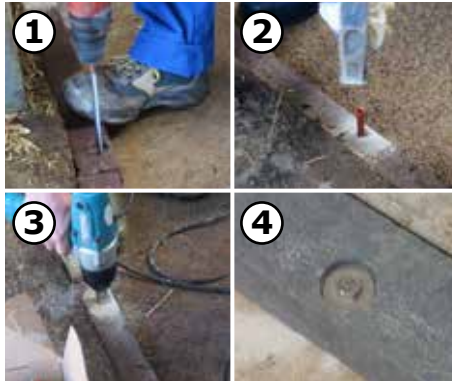
### After renovation



## The three-layer system VITA was installed in the calving area:



first, the border of the area is laid out with frame profiles



afterwards the frame profiles are fixed



the next step is to fill in the complete area with lower mats...



...then foam parts are placed on the lower mats



and now the top covering is rolled out...



...and positioned



after that, covering strips are placed on the top covering



finally the covering strips are fastened on the top covering with spax screws



you will find **further** interesting **practical experiences** at: [www.kraiburg-elastik.com](http://www.kraiburg-elastik.com)

Renovation calving area - 05/2017